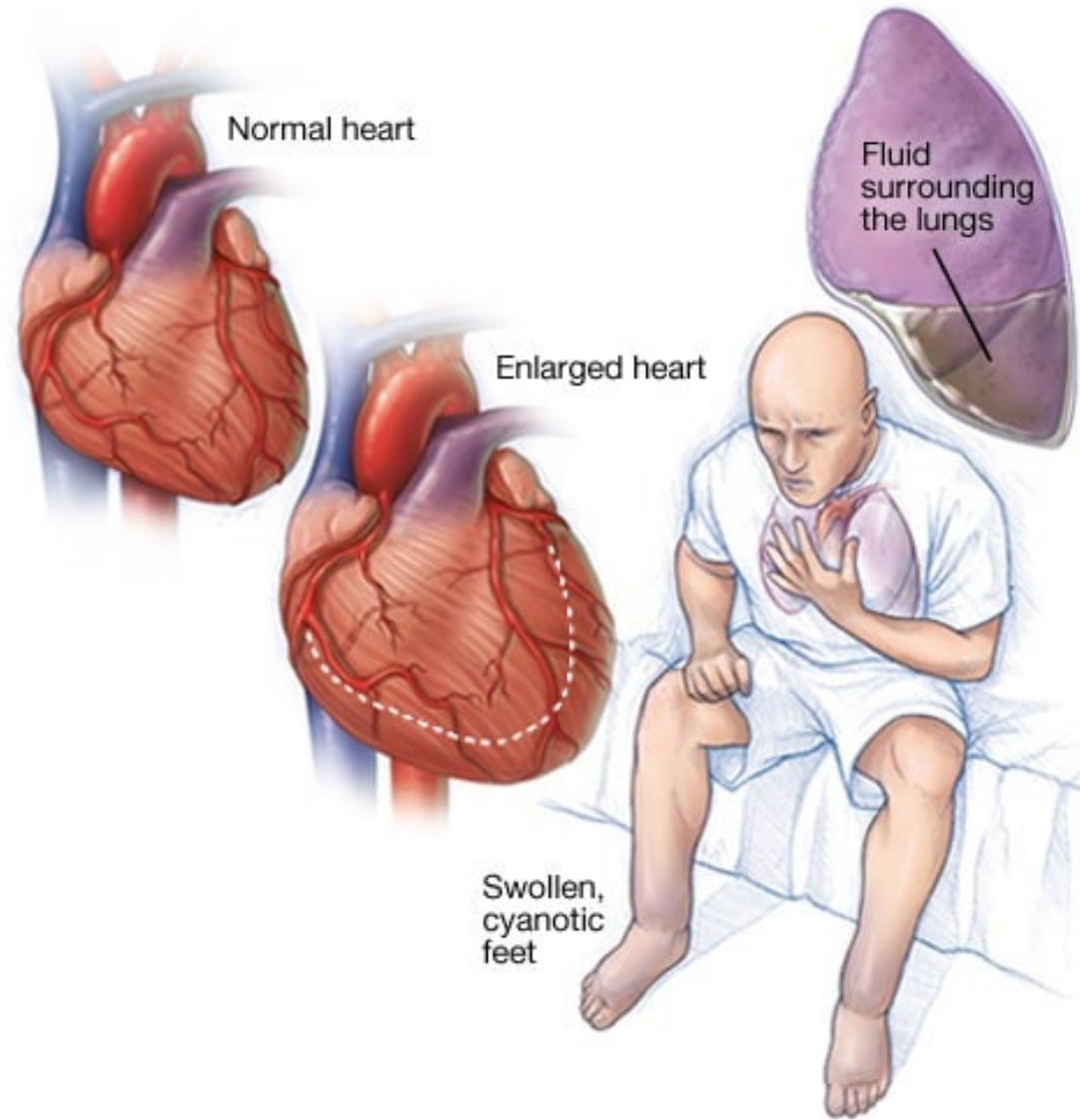


What is the Value of Digital Tools for Heart Failure Patients?

Dr. Martijn Scherrenberg
Jessa Hospital
University of Hasselt





© MAYO FOUNDATION FOR MEDICAL EDUCATION AND RESEARCH. ALL RIGHTS RESERVED.



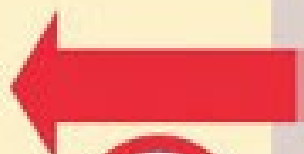
Patient at home

Medical Service Center

Doctor or nurse in the hospital



Tablet with
Telemonitoring App



Specialised nurse



The same day

Heart Failure:

- Body weight daily
- Blood pressure once a week
- Pulse once a week
- Questionnaire once a week

Heart Failure:

- **Body weight:**
 - >1.5 kg increase
 - >1.5 kg decrease
- **Systolic blood pressure:**
 - <100 mmHg
 - >140 mmHg
- **Pulse:**
 - >45 bpm decrease
 - >75 bpm increase
- Or deviation of a 'preset bandwidth'

Action taken, e.g.:

- Adjustment of medication
- Blood test



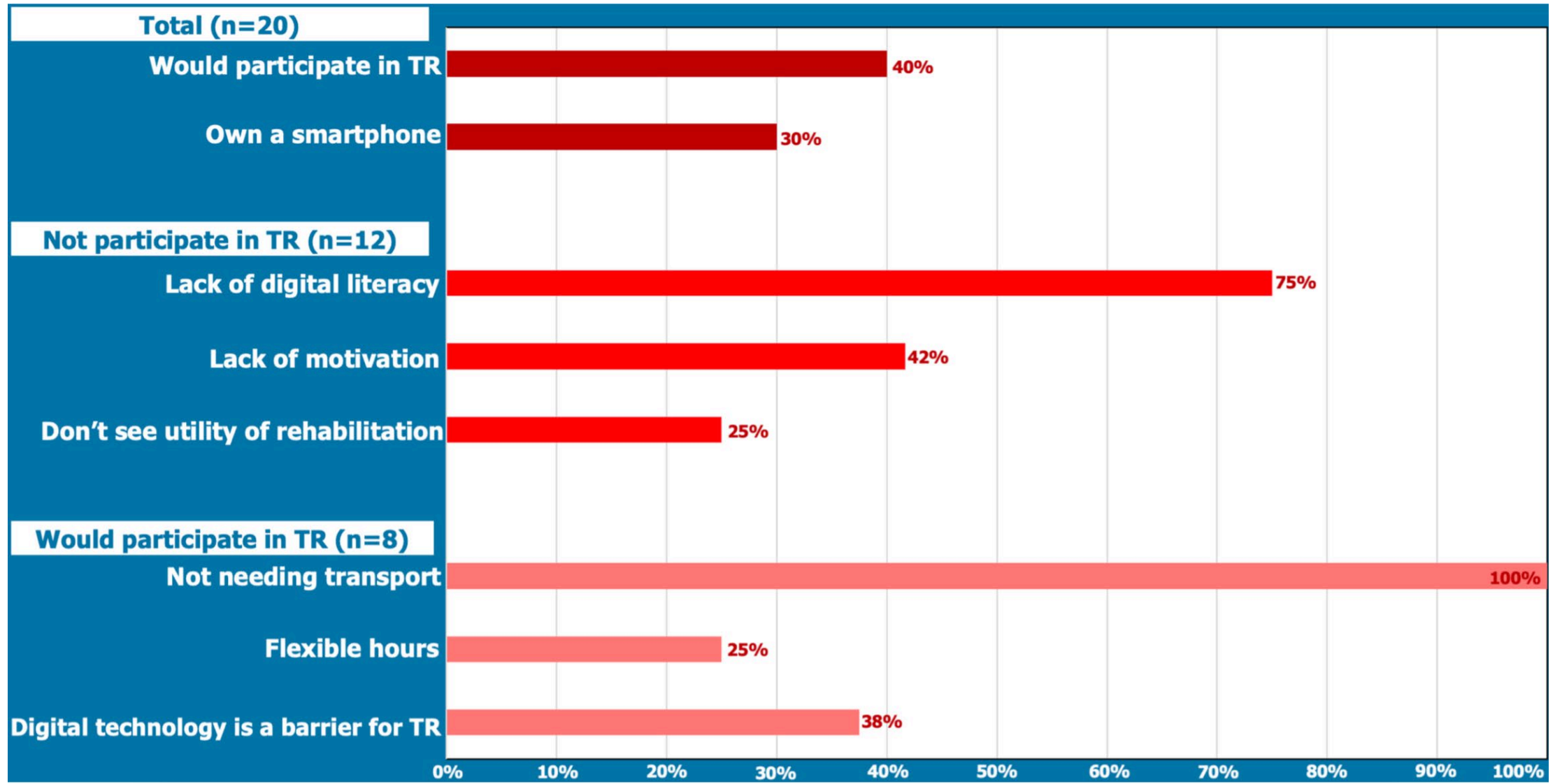
	Remote patient management (n=765)		Usual care (n=773)		Ratio, remote patient management vs usual care (95% CI)	p value
	Number of patients with event	Weighted average (95% CI)	Number of patients with event	Weighted average (95% CI)		
Percentage of days lost due to unplanned cardiovascular hospitalisation or death of any cause	265 (35%)	4.88% (4.55–5.23)	290 (38%)	6.64% (6.19–7.13)	0.80* (0.65–1.00)	0.0460
Days lost per year	..	17.8 days (16.6–19.1)	..	24.2 days (22.6–26.0)
All-cause mortality†	61 (8%)	7.86 (6.14–10.10)	89 (12%)	11.34 (9.21–13.95)	0.70‡ (0.50–0.96)	0.0280
Cardiovascular mortality†	39 (5%)	5.04 (3.68–6.90)	59 (8%)	7.51 (5.82–9.70)	0.67‡ (0.45–1.01)	0.0560

*Ratio of the weighted average. †Measured during individual patient follow-up time plus 28 days after the last study visit, to a maximum of 393 days. ‡Hazard ratio.

Table 2: Primary and key secondary outcomes







Willingness of non-participants of conventional cardiac rehabilitation to participate in cardiac telerehabilitation: results of semi-structured interviews. Maarten Falter, Martijn Scherrenberg, Paul Dendale. Unpublished.

**PULMONARY
ARTERY PRESSURE
SENSOR**



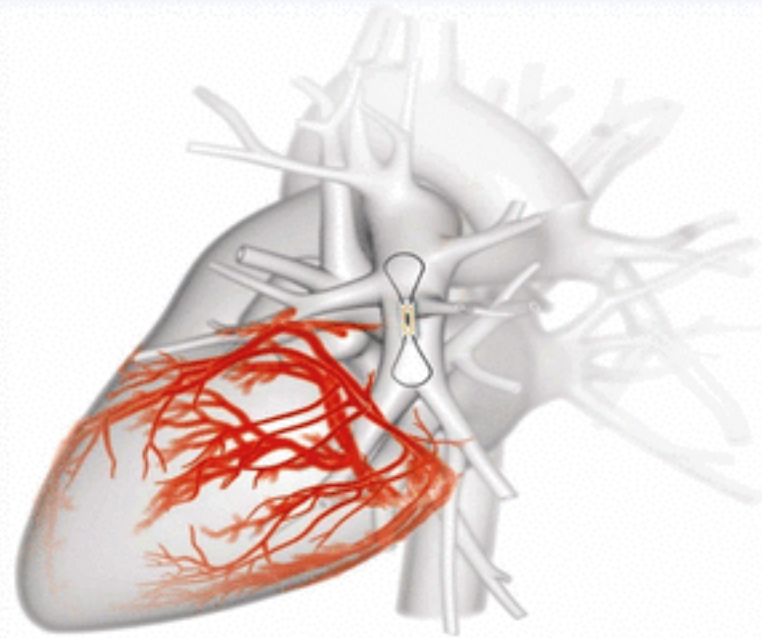
**PATIENT
ELECTRONICS
SYSTEM**



**MERLIN.NET™
PCN**



**TARGET LOCATION FOR
PA PRESSURE SENSOR**





What is the value of digital tools for cardiovascular patients?

<https://www.ehnheart.org/medias/news/1838-digital-tools-value-cvd-patients.html>